



ProxPoint™

BC4520

ProxPoints process all tag signals in range, assessing the signal strength and applying algorithms to determine location and movement. Using our Loop software, you can access all data received from the ProxPoints on your site.

Configurable radius coverage

The coverage area of each ProxPoint can be uniquely customised, based on your BlueCats solution and the needs of your worksite.



Features



TOUGH

- IP67 rated
- UV, chemical-resistant



BROADCAST RANGE

- Proximity detection: up to 400 meters
- Normal operation: 100 meters



SIMPLE DEPLOYMENT

- Compact size
- Uniquely configurable



POWERFUL & FLEXIBLE

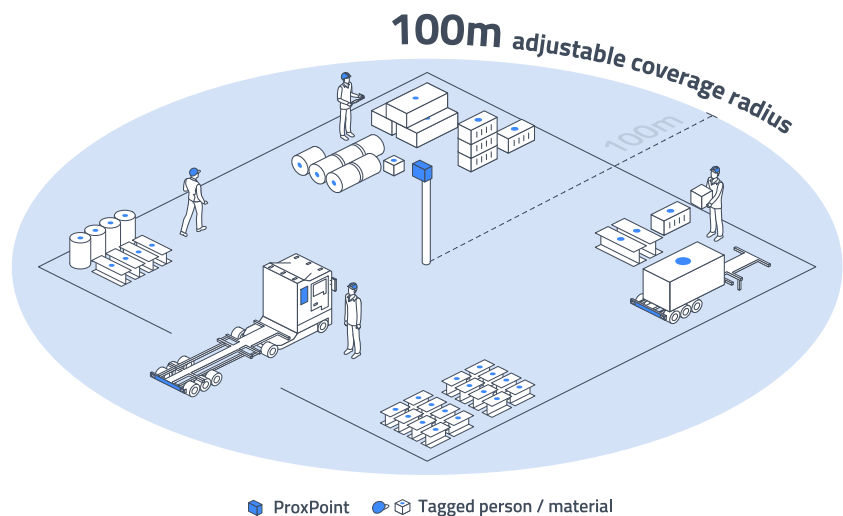
- Process thousands of tags in real time
- Send data to cloud or on-premise service
- LTE, Wi-Fi, or Ethernet network connection



MANAGEABLE

- Over-the-air updates
- Device diagnostics

Solution Visualisation



■ ProxPoint ■ Tagged person / material

Works Great With

- SafetyTags™ (BC2611)
- BC313
- BC2500
- BC2612
- BC2401
- BC2501



Specifications

CONSTRUCTION

Dimensions	199 mm (H) x 123 mm (W) x 57 mm (D)
Weight	520 g
Power Options	USB, 5-24VDC Input Range
Operating Temperature	-40°C to +85°C

WIFI

Wireless Module	Redpine Signals RS9116
Wireless Protocols	802.11 b/g/n/a; Bluetooth 5
Wireless Modes	Wi-Fi Access Point, Wi-Fi Client, Wi-Fi Direct
Wireless Frequencies	Dual band: 2.4 GHz, 5 GHz

BLUETOOTH

Normal/Max. Range	100 meter / 400 meter max.
BLE SoC	TI CC4640
Number of BLE SoCs	4
BLE Protocol	4.2
Max Transmit Power	5 dBm
Receiver Sensitivity	-97 dBm
BLE Antennas	4 (channel + spatial diversity)

CELLULAR

Wireless Module	Quectel BG96
Region	Global
GNSS	GPS, GLONASS, BeiDou/Compass, Galileo, QZSS
SIM Card Slot	Size: 3FF (micro)

DEVICE

Processor	Renesas Synergy S7 240 MHz Arm® Cortex®-M4 CPU
Flash	Internal: 4MB, External: 8 MB
RAM	Internal: 640 kB, External: 8 MB
Ethernet	10/100M
Protocols	UPD / MQTT / HTTP(S)

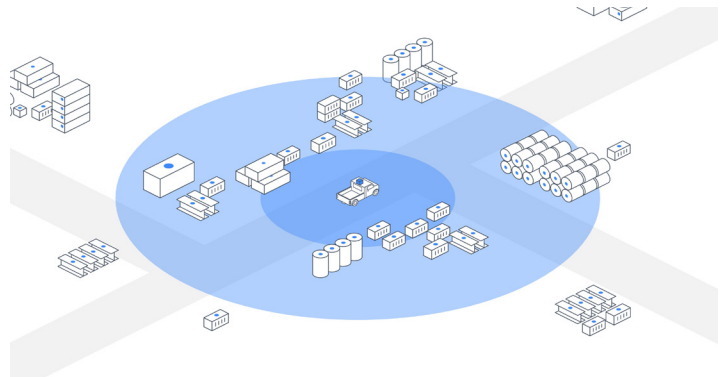
Huntsville, Alabama
6767 Old Madison Pike NW, Suite 300
Huntsville, AL 35806
+1 256 217 4072

Austin, Texas
2404 Rutland Drive, Suite 175
Austin, TX 78758
+1 256 217 4072

Sydney, Australia
Ground Floor, 1 Northcliff St
Milsons Point NSW 2061, Australia
+61 2 8912 7700

Variations

Mobile ProxPoint



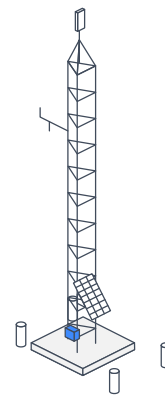
Uses

- Covering remote areas where standard ProxPoints may not be installed

Features

- Mount to service vehicles that traverse a worksite
- Continually scan and crowdsource Bluetooth LE Tag signals
- LTE and GPS
- 12VDC Power Adaptor

Pole Mount Option



VARIANTS

BC4520.01.03.66.WH	+12 VDC Edge Relay, Indoor/Outdoor
BC4520.01.04.66.WH	Automotive Edge Relay, Indoor/Outdoor



Get in touch
sales@bluecats.com
bluecats.com